

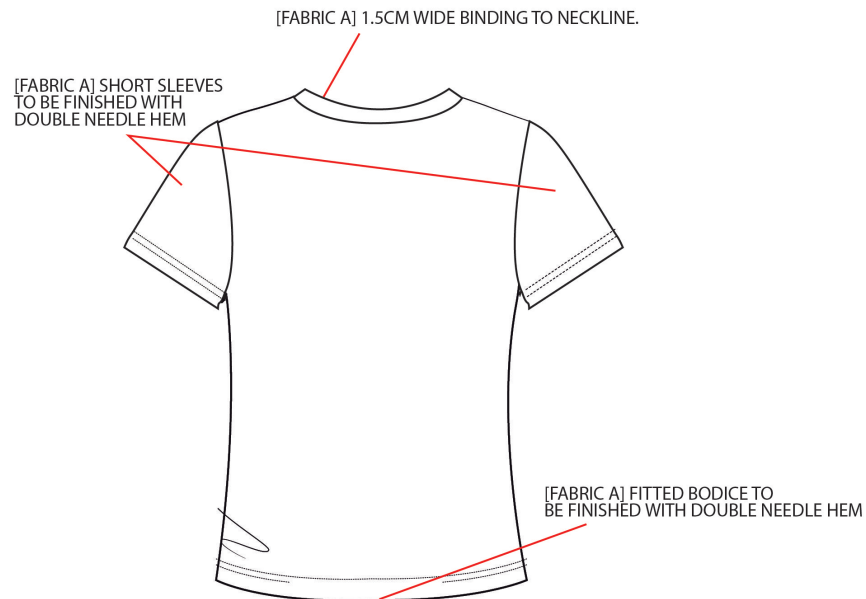
# GRAPHIC TEES - HALLOWEEN 18

<b>Poundland®</b>		<b>DATE:</b>	23/11/2017
<b>COLLECTION:</b>	HALLOWEEN 18	<b>COLOUR:</b>	BLACK C & 7579C
<b>DESCRIPTION:</b>	GRAPHIC TEES	<b>FABRICS:</b>	JERSEY, 95% POLYESTER 5% ELASTANE



# LADIES WITCHES TEE - WORKING DRAWING

FABRIC A: ORANGE 7579C JERSEY,  
95% POLYESTER, 5% ELASTANE



# LADIES WITCHES TEE - ARTWORK

FABRIC A: ORANGE 7579C JERSEY,  
95% POLYESTER, 5% ELASTANE

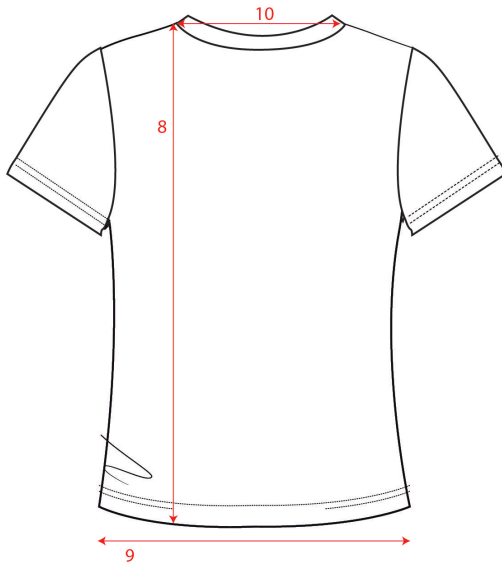
METALLIC PRINT ARTWORK - NOT TO SCALE  
PLEASE PLACE AS INDICATED ON CAD



PANTONE REF:



## LADIES WITCHES TEE - GUIDE TO MEASURE



## LADIES WITCHES TEE - SIZE CHART - SIZE 8-10

MEASURING POINTS			
	TOP	SIZE 8-10	TOL +/-
1	FRONT NECK DROP FROM BACK NECK	7	0.5
2	SHOULDER	10.5	1
3	SLEEVE OVERARM	17	1
4	SLEEVE OPENING	15	1
5	ARMHOLE STRAIGHT	19	1
6	ACROSS CHEST AT UNDERARM	42	1
7	ACROSS WAIST 18CM BELOW ARMHOLE	42	1
8	SNP TO HEM	63	1
9	HEM WIDTH	46	1
10	BACK NECK STRAIGHT	18	1
11	BACK NECK DROP	2.5	0.5