

## Description:

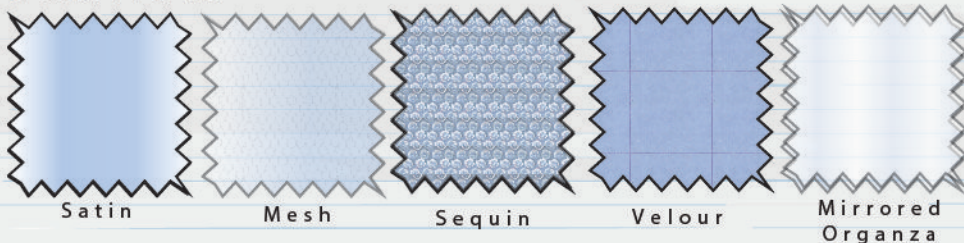
Velour bodice with CF panel with mixed matte and glitter sequin overlay. Gather detail to side bodice panels. Elasticated satin straps. Gathered mirrored organza bust panel and off the shoulder sleeves. Character FOB to CF neckline. Gathered mirrored organza peplums with satin binding to edge. Braid trim detail to edge of CF panel and neckline. Satin skirt with mesh overlay. Overlay to have two colour glitter print and corded hem. Plain mesh overlay to continue to back skirt. Back bodice to be velour.

## Accessories:

Plastic tiara with character picture and gems.



## Fabrics:





## Description:

Velour bodice with satin CF panel with flower shaped sequin fabric overlay. Embroidered eyelets to bodice with criss cross satin ribbon detail. Character FOB to CF neckline. Collar in spot detail satin to be backed in felt to help keep shape. Satin puff sleeves with self frill. Satin ribbon with lurex detail to sleeves. 3D mesh flower to CF waist. Pleated velour peplums. Gold lace trim to edge of collar, CF bodice panel and peplums. Satin skirt with mesh overlay. Overlay to have two colour glitter print and corded hem. Plain mesh overlay to continue to back skirt. Back bodice to be velour.

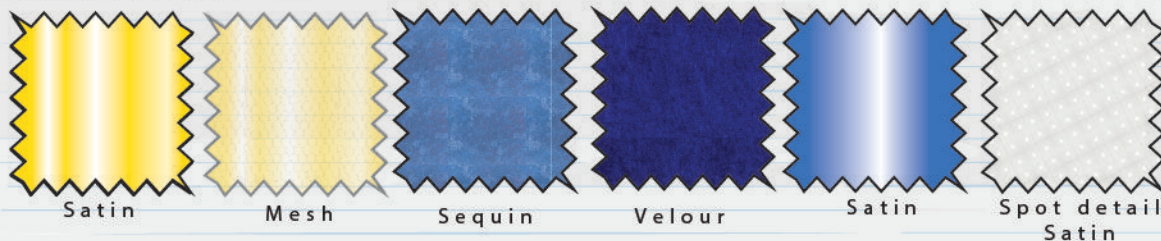
## Accessories:

Satin covered headband with bow detail.

## Sleeve ribbon detail:



## Fabrics:







### Amends to sample:

- Plain velour changed to gold foil dot velour.
- Sequin changed from matte to shiny.
- Lace trim added at waist seam.

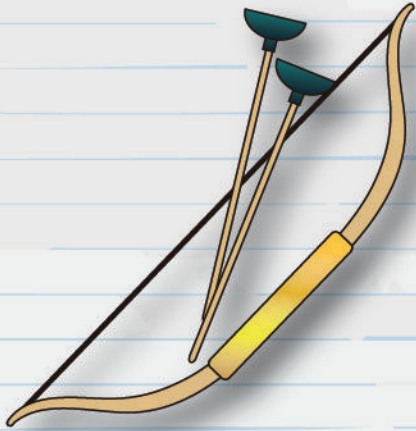


### Fabrics:





## Accessories:



Bow & Arrow



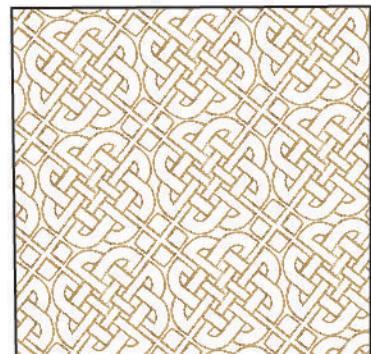
## Description:

Velour bodice with v-shaped sequin panel with braid trim to edge. Criss cross detail in satin ribbon to panel with embroidered mock eyelets. Side bodice panels in glitter print velour with sequin trim detail to edge. Satin binding to neckline. Long sleeves in velour with gathered glitter print satin panels. Character FOB to CF neckline. Satin skirt with mesh overlay to have two colour glitter print and gold overlocking to hem. Glitter print satin belt with 3D plastic buckle and gathered tie to hang down.

## Fabrics:



## Glitter print repeat:





Printed satin  
ribbon tape measure

## Accessories:



Printed felt bag with printed felt umbrella, Foam bonded velour hat.

## Description:

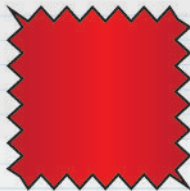
Irregular glitter dot print twill mock jacket with long sleeves, lapels and peplum. Inserted panel and frill collar and cuffs in satin. Bagged out bow in satin with character FOB to neckline. Satin binding to edge of lapels and peplum. Iridescent braid trim down sides of mock jacket and peplum. Crystal effect 3D plastic buttons to CF mock jacket. Printed satin ribbon "tape measure" to one side of mock jacket. Skirt in poly twill with two tone glitter print to hem.



## Fabrics:



Poly Twill



Satin



Satin



Satin



Velour



Poly Twill with Glitter Dot Print



Crystal Button



Embroidered  
robin motif



## Description:

Ombre poly twill coat dress to have long sleeves and layered shoulder panels. Contrasting lapels and mock belt in glitter satin. Decorative 3D plastic crystal buttons and buckle. Inserted mock scarf in printed satin. Disney logo embroidery.

## Accessories:

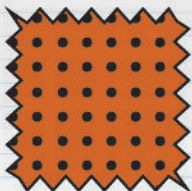
Foam bonded velour hat with satin band and embroidered robin motif.



## Fabrics:



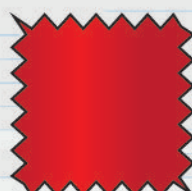
Ombre  
Poly Twill



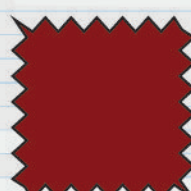
Satin



Glitter  
Satin



Satin



Velour



Crystal  
Button



Description:

Canvas tote bag with bagged out straps. Screen and glitter prints to front. Printed Disney logo to lower front.

Fabrics:



Canvas





Description:

Canvas tote bag with bagged out straps. Screen and metallic prints to front. Printed Disney logo to lower front.

Fabrics:



Canvas