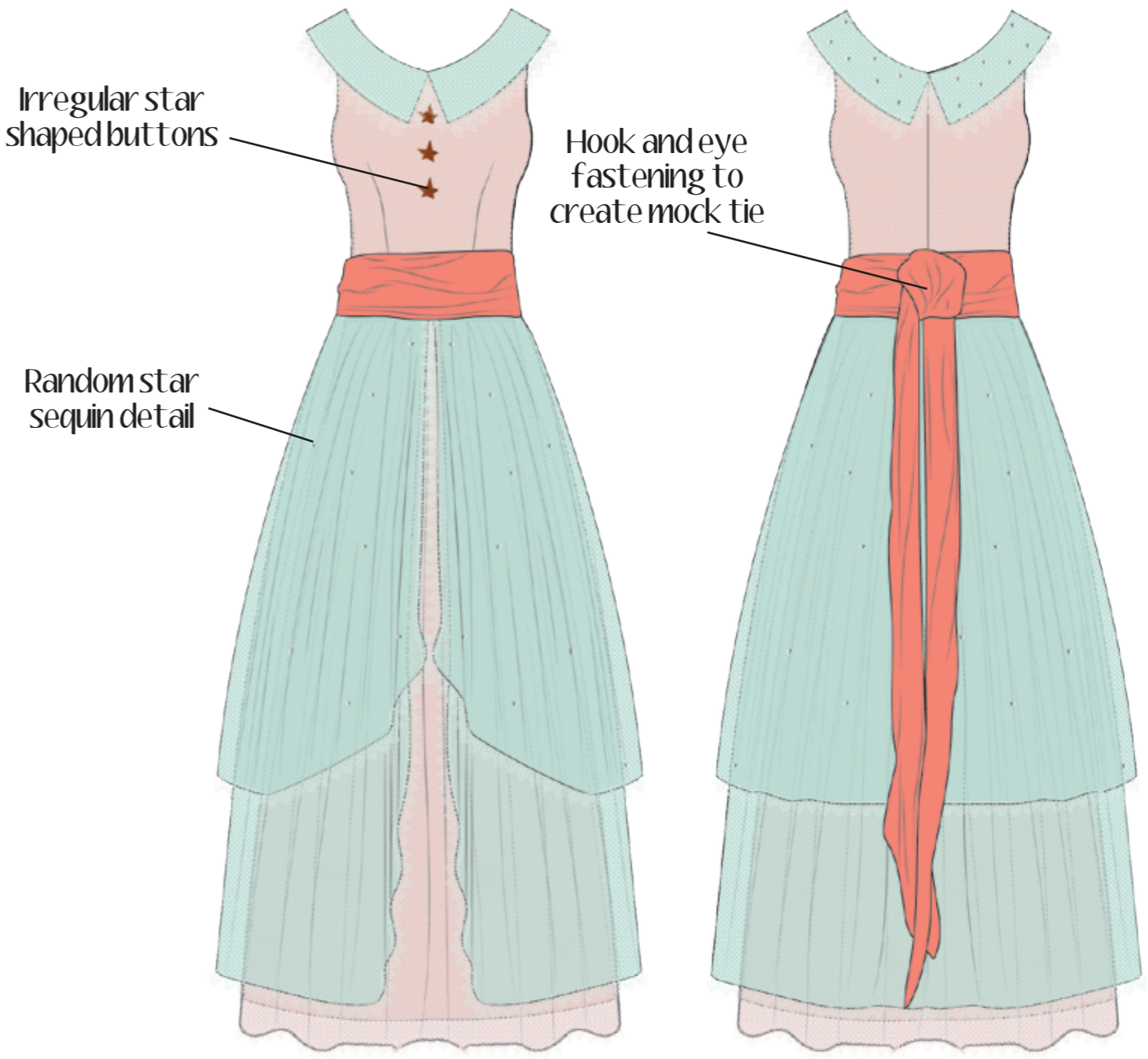
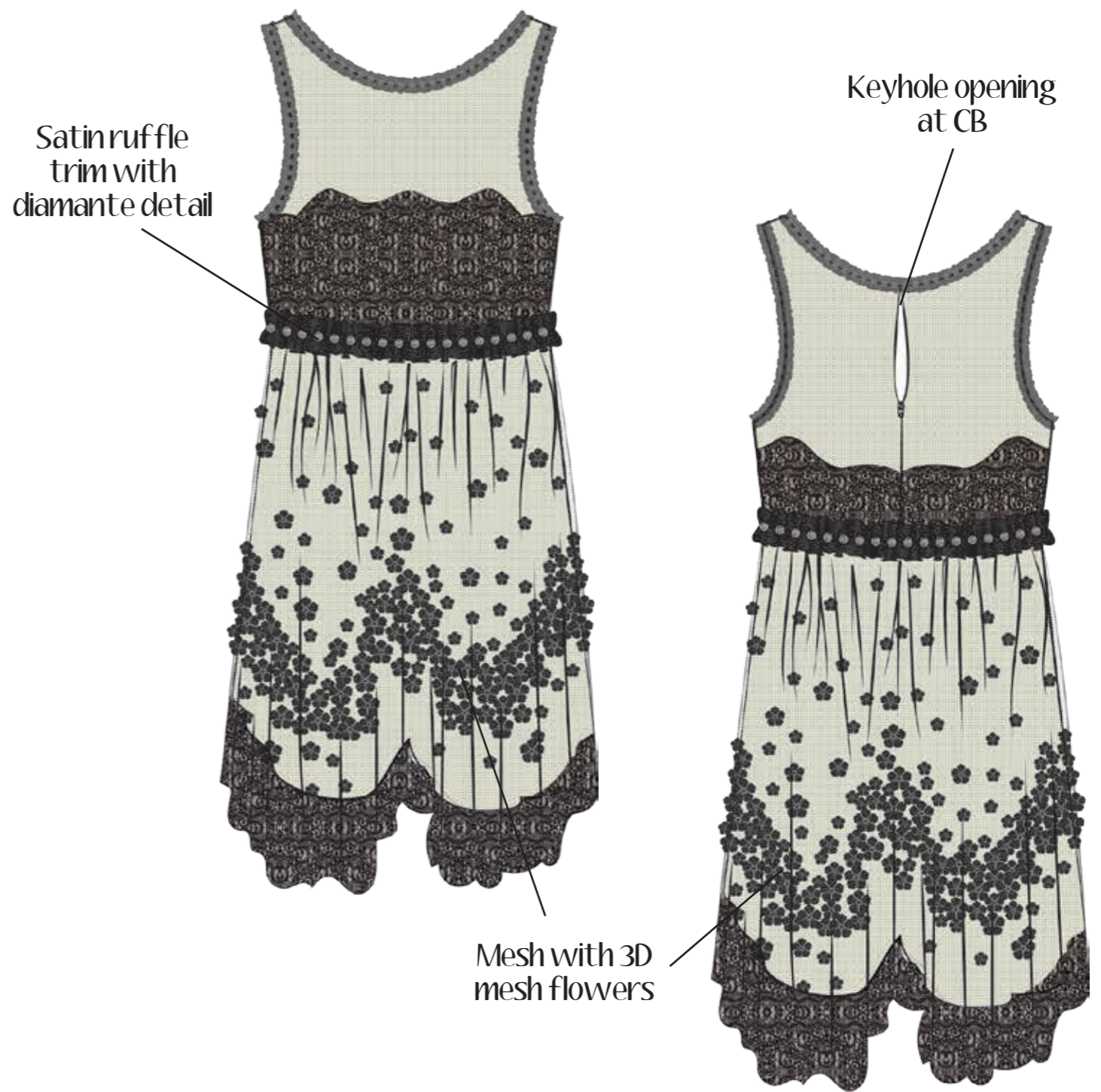


Girls & Ladies: Ginny Weasley Yule Ball Dress



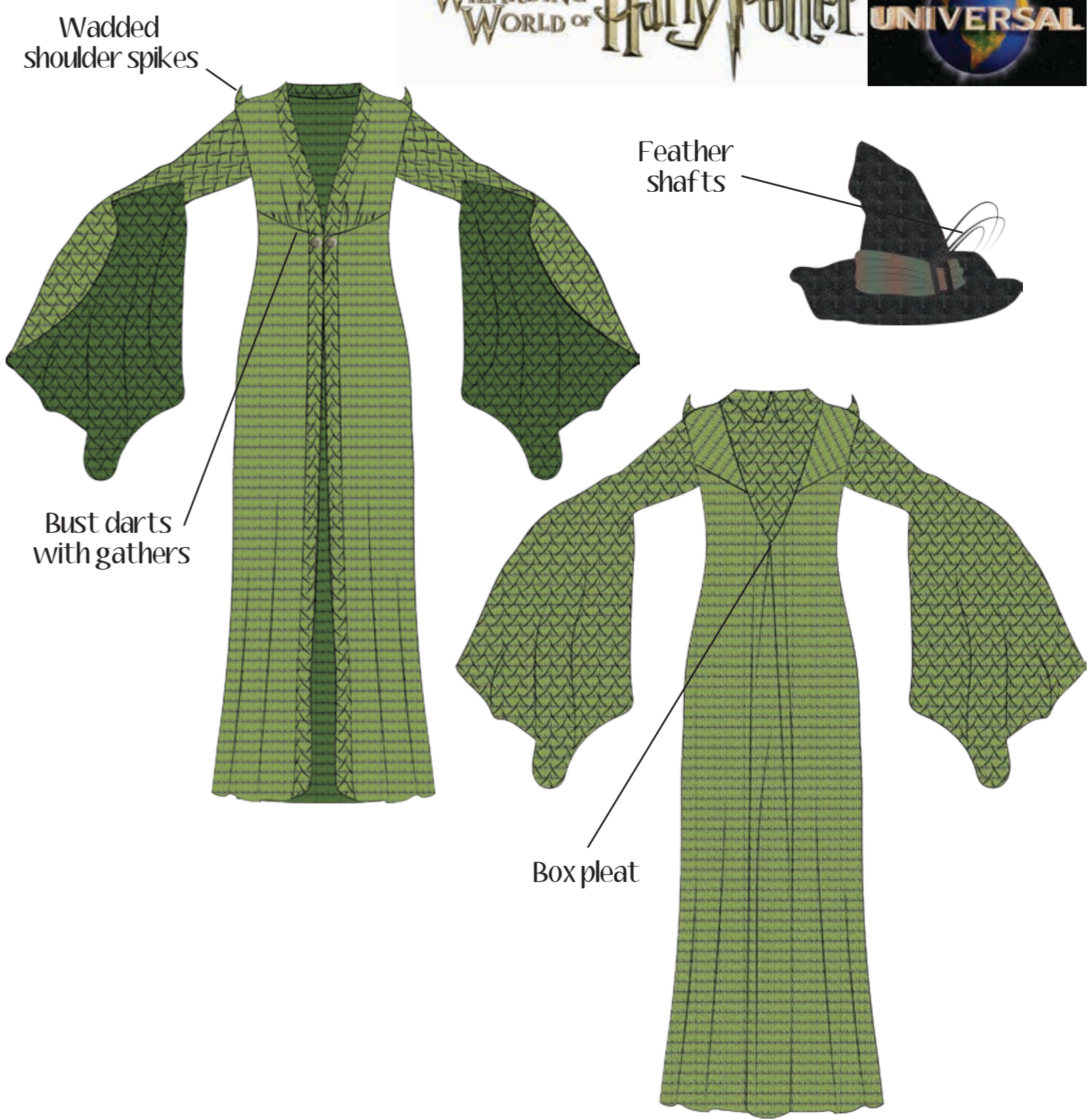
Area:	Material details:	Pantone colour:
Collar & top mesh layers	Mesh	2254C
Bodice overlay & lower mesh layer	Mesh	7604C
Bodice lining	Lightweight poly satin	488C
Underskirt & lining	Satin	7605C
Waistband	Lightweight poly satin	170C
Buttons	Plastic	7508C
Star sequins	Plastic sequin	877C

Girls & Ladies: Ginny Weasley Bridesmaid Dress



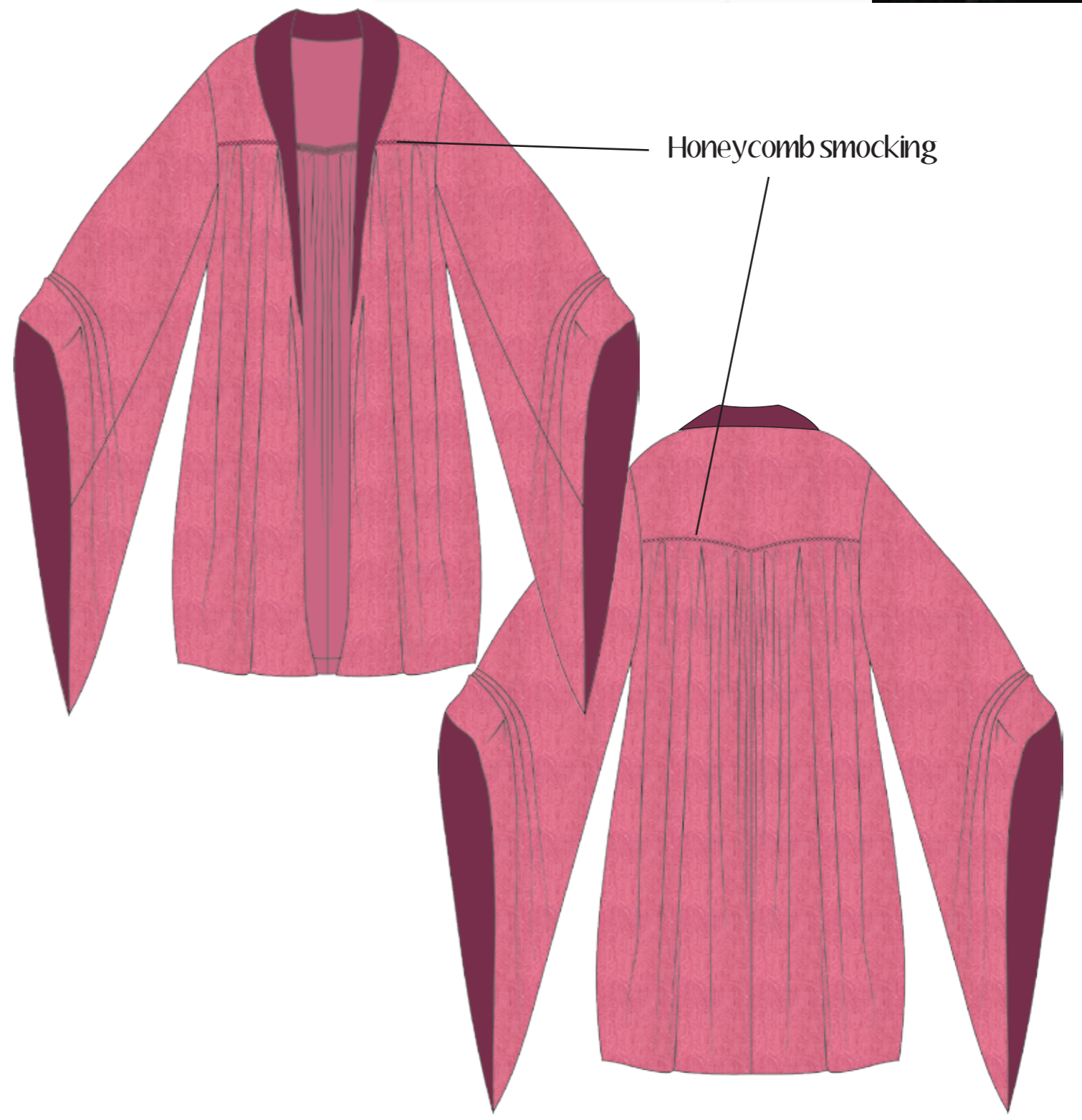
Area:	Material details:	Pantone colour:
Main dress	Crinkle chiffon	7499C
Dress overlay	Mesh with 3D flowers	Black C
Bodice & hem panels	Lace with sequins	Black C
Waist ruffle trim	Satin with diamantes	Black C & 877C
Bodice ruffle trim	Mesh with diamantes	Black C & 877C

Ladies: Professor McGonagall Yule Ball Robes



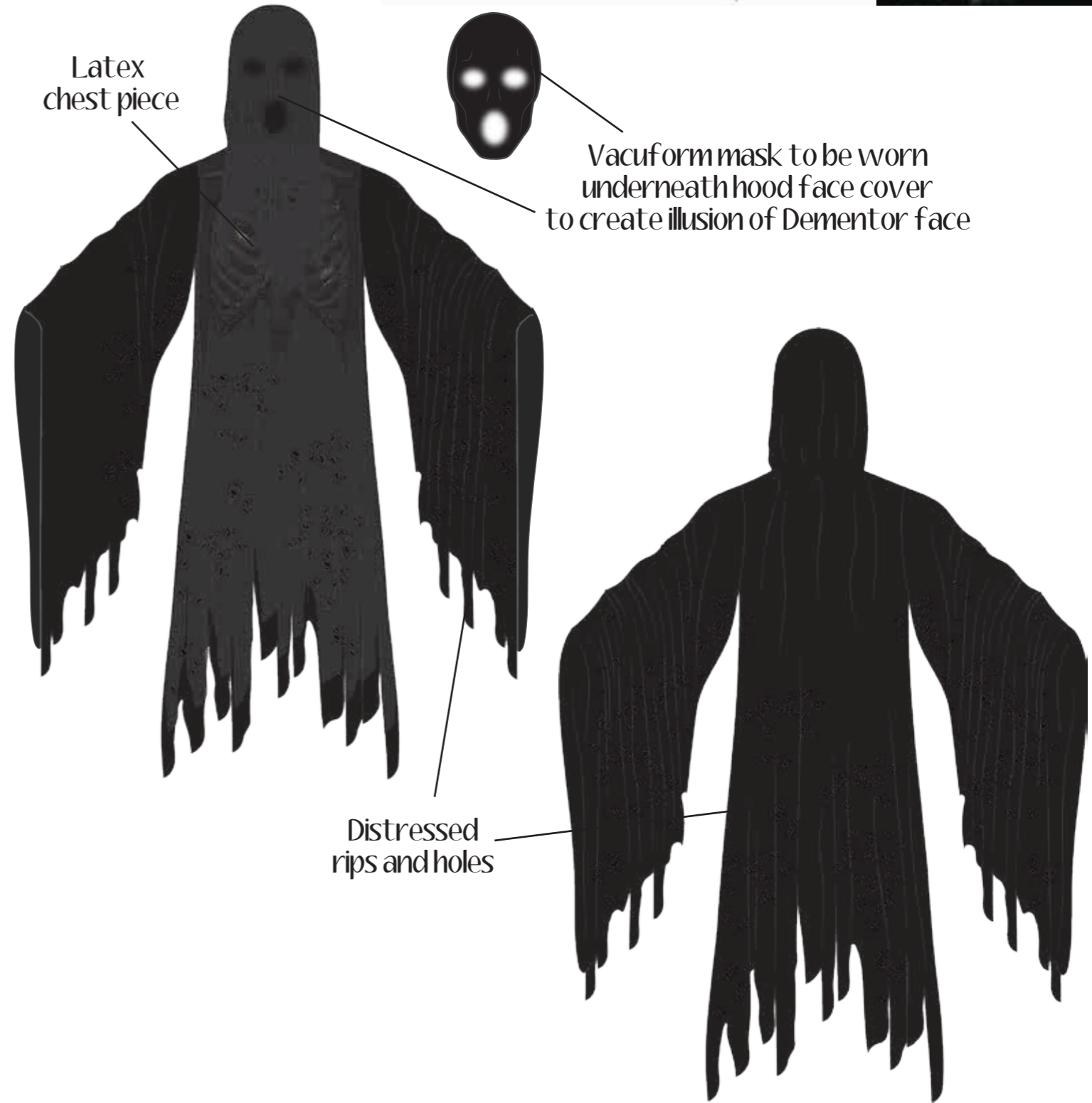
Area:	Material details:	Pantone colour:
Front & back robes	Printed taffeta	2276C
Sleeves and panels	Pleated effect printed taffeta	2276C
Buttons	Metal	877C
Hat brim	Embossed velour	Black C
Hatband	Metallic knit	200C & 354C
Hat buckle	Plastic	Black C
Hat trim	Ostrich feather	Black C

Ladies: Dolores Umbridge Robes



Area:	Material details:	Pantone colour:
Outer	Lightweight jacquard	7634C
Collar & sleeve lining	Velour	7642C
Lining	Heavy lining fabric	7634C

Mens: Dementor



Area:	Material details:	Pantone colour:
Front hood face cover	Distressed chiffon	Black C
Chest piece overlay	Distressed chiffon	Black C
Front robe overlay	Distressed chiffon	Black C
Robe & sleeves	Distressed silky feel woven	Black C